

C A C T U S  
CHRONICLE

A U G U S T 2 0 2 2

VOL. 90 ISSUE 08



THIS MONTH'S PROGRAM

YEMEN ISLAND  
OF SOCOTRA

WITH KELLY GRIFFIN

Photo credit: Kelly Griffin

LACSS MONTHLY MEETINGS, WILL BE HELD IN-PERSON  
AND ON ZOOM EVERY FIRST THURSDAY OF THE MONTH  
MEETING START TIME: 7PM, HOST WILL OPEN ROOM AT 6:15PM  
ONE GENERATION: 18255 VICTORY BLVD. RESEDA CA.

# B O A R D OF DIRECTORS

2 0 2 2

## LACSS MISSION STATEMENT

The Los Angeles Cactus and Succulent Society (LACSS) cultivates the study & enjoyment of cacti & succulent plants through educational programs & activities that promote the hobby within a community of fellow enthusiasts & among the greater public.

### **PRESIDENT**

Joyce Schumann

### **PAST PRESIDENT**

Kim Thorpe Chavez

### **1ST VP, PROGRAMS**

Ron Behar

### **2ND VP, PLANT OF THE MONTH**

Manny Rivera

### **3RD VP, SPECIAL EVENTS**

Cande Friedman

### **SECRETARY**

Kate Eplboim

### **TREASURER**

Nick Steinhardt

### **DIRECTOR 1 MEMBERSHIP**

Rosemary Polito

### **DIRECTOR 2 SPECIAL EVENTS**

Jim Esterle

### **CACTUS CHRONICLE EDITOR**

Kimberly Gomez-Tong  
newsletter@lacactus.com

### **MEETING REFRESHMENTS**

Karen Holley

### **WEBMISTRESS**

Nancy Neymark

### **CSSA LIAISON**

Roxie Esterle

### **SALE CHAIRS**

John Van Unen,  
Kimberly Gomez-Tong

### **INTER-CITY REPRESENTATIVES**

Manny Rivera  
with John Van Unen + Kimberly Gomez-Tong

### **MONTHLY DRAWING**

Al Mindel

### **PLANT PROCUREMENT**

Collin O'Callaghan

### **HISTORIAN**

Sandy Chase

### **AWARDS DINNER CHAIR**

Vacant

### **LIBRARIAN**

Susan Phillips

### **POM PLANT DESCRIPTIONS**

Kyle Williams

### **ZOOM MANAGEMENT**

Kimberly Gomez-Tong

### **SOCIAL MEDIA**

Nicole Alter - Instagram

### **COVID COMPLIANCE OFFICER**

Emily Akers

# FROM THE MESSAGE PRESIDENT

Is it August already??? And what does that mean to the cactus and succulent world?? The Intercity Show and Sale!!! As I said before, it is not the world's largest but it is the New World's largest! Soooo many plants, pottery, and supplies available to fill a void in your collection.....The LACSS 2023 POM list has appeared in the Chronicle so now is a good time to stock up on the plants you need for POM competition! I hope to see all of you there. If you have any questions regarding the show and sale, feel free to ask at the meeting.

We may be phasing out the refreshment feature of our meetings. It takes a lot of time to set up the tables, etc and then to clean up after the meeting. There seems to be little interest in the offerings and we could use the space for something else. Let me know what your thoughts are on not have any refreshments. Or, if we were to continue, what would you find appetizing???

It seems like the pandemic just keeps hanging around, mutating, and annoying most of us. Our policy continues to be a "mask optional" approach. Our concern is always the safety of our members so masks will be available if you forgot yours.

For our ZOOM attendees – how are you enjoying the program? Now I know how the weatherperson feels talking to the camera while waving in a vague direction. Thanks to our video/directors for keeping us on the spot and not allowing us to turn our backs to the audience. But we need some feedback regarding visual and audio quality. Are we speaking too fast or slow? Can you understand the speaker? Are you able to see what we are talking about? And so on.....We know you are there but we are not professional speakers and would appreciate any comments to improve the quality of the program you are watching.

I am pleased to see so many members returning to the library, looking for new reading material. (If you checked out a book prior to the shutdown, please return it as soon as possible). Next month there will be several new (to us) publications available. These will be featured in a column next month.

And now for the ubiquitous question: How does your garden grow? I have lost a couple of cacti and succulents. Too much or too little water? Only the plant knows. Most cacti are partially dormant at this time with little to no growth. Watering should be minimal. Just enough to keep the small, feeder roots from totally drying out and dying. A list of the summer/winter growing succulents will be available as a hand out at this meeting to aid you in their watering needs. The "stick your finger into the soil up to the first joint to see if the soil is moist at that level" seems to work best for me for all the plants. Fertilization is optional in August, in my opinion. As a broad stroke, only for the summer growing succulents and not for anything else. And at half strength. So there you have it. My opinion and I'm sticking with it!!

See you soon. Stay safe and healthy and happy summer.

Joyce



INTERCITYSHOW.COM



@INTERCITYSHOW / @SGVCSSCLUB



**ARBORETUM  
MEMBERS  
FREE!**



36TH ANNUAL

# INTER-CITY CACTUS AND SUCCULENT SHOW & SALE



**LOS ANGELES COUNTY ARBORETUM**

ADVANCE TICKETS REQUIRED. AVAILABLE AT [ARBORETUM.ORG](http://ARBORETUM.ORG)



**9AM-5PM**

# AUG 5,6,7



**SALE 8/5-7  
SHOW 8/6-7**



**OVER 1400 PLANTS ON DISPLAY!**

**RARE AND UNUSUAL PLANTS & POTS FOR SALE**

**FOR MORE INFO**

# *Inter-city Show and Sale*

## R E S O U R C E S

Print this page to scan QR codes:

On your compatible Android phone or tablet, open the camera app.

Point the camera at the QR code to scan.

Tap the banner that appears on your screen.

You will be automatically redirected to the website.



**INTER-CITY  
SHOW WEBSITE**

**CLICK HERE**



**INTER-CITY  
SHOW SCHEDULE**

**CLICK HERE**



**INTER-CITY  
SHOW NEWSLETTER**

**CLICK HERE**

**O R**

T H I S M O N T H ' S S P E A K E R

# KELLY GRIFFIN

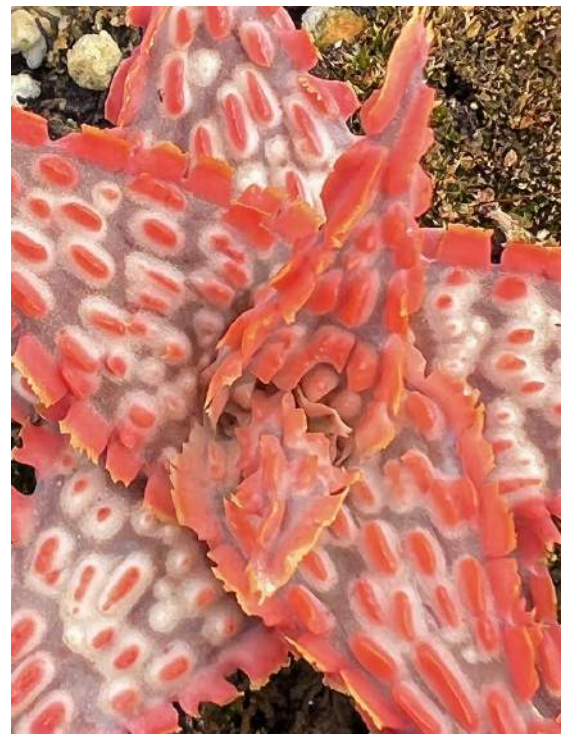
Kelly is a succulent plant hybridizer, propagator and avid plant explorer. Like many of us, his interest in plants and particular succulent plants, started at a fairly young age. Since his early exposure, Kelly has traveled to 20+ countries searching for plants, visiting Madagascar 5 times, South Africa 5 times and over 25 times to Mexico, to name a few. He worked as the Curator of Succulents at Rancho Soledad Nursery for 11 years and for the past 10 years he has been working for Altman's Plants as Succulent Plant Development Manager.

He has become well known for his hybridizing and is responsible for over 100 succulent hybrids now in the trade, including Aloes, Agaves and Echeverias. His specialty that he is well known for are his Aloe hybrids that are 30 years in the making (Pink Blush, Delta Lights, Christmas Sleigh and Coral Fire etc.) and some Agave hybrids and selections too (Blue Glow, Snow Glow, Cubic, Black and Blue, Dragon toes, Spawn, and Crème Brûlée to name just a few). He is also responsible for obtaining seed from many interesting species and propagating the seed for all to enjoy in cultivation.

Kelly has been a member of the San Diego Cactus and Succulent Society since 1992. He has been on the board of Directors for the SDCSS for way too long, he served 4 years as your club President and 2 years as Vice-President. He was very honored to be named a Fellow of the San Diego Society.

He currently serves as a Director on the board of the Cactus and Succulent Society of America.

**HE WILL BE BRINGING HIS HYBRIDS AND SOME SEED GROWN PLANTS FOR SALE.**





# PLANT <sup>Of</sup> <sub>the</sub> MONTH

2 0 2 2

## JANUARY

Frailea  
Adromischus

## FEBRUARY

Monotypic  
Senecio, Othonna

## MARCH

Mammillaria Clusters  
Aloe Clusters

## APRIL

Escobaria, Acharagma  
Aizoaceae Thickened Roots

## MAY

Cacti staged as miniature  
Succulent staged as miniature  
(Diameter of pot  
NO LARGER THAN 3")

## JUNE

Favorites

## JULY

Discocactus  
Dyckia

## AUGUST

Thelocactus-Hamatocactus  
Bursera

## SEPTEMBER

Gymnocalycium  
Euphorbia Millii type

## OCTOBER

Astrophytum  
Sanseveria

## NOVEMBER

Variiegated  
Variiegated

## DECEMBER

Holiday Awards Party

# PLANT <sup>Of</sup> <sub>the</sub> MONTH

2 0 2 3

## JANUARY

Matucana, Submatucana, Oroya  
Aeonium

## FEBRUARY

Coryphantha, Neolloydia, Neobesseyia  
Sarcocaulon

## MARCH

Echinocactus  
Anacampseros, Avonia

## APRIL

Aztekium, Epithelantha  
Aloinopsis, Antimima, Aptenia, Argyroderma

## MAY

Cacti staged as miniature  
Succulent staged as miniature  
(Diameter of pot  
NO LARGER THAN 3")

## JUNE

Favorites

## JULY

Melocactus  
Euphorbia Medusoid

## AUGUST

Mammillaria (Dichotomous & 2 Heads)  
Gasteria, Astroloba

## SEPTEMBER

Cacti from Coahuila  
Nolina, Calibanus, Beaucarnea

## OCTOBER

Espostoa  
Fouquieria

## NOVEMBER

Crest and Monstrose

## DECEMBER

Holiday Awards Party





P L A N T O F T H E M O N T H

# BURSERA + COMMIPHORA

B Y K Y L E W I L L I A M S

Bursera is a member of the Burseraceae a plant family of drought tolerant shrubs to trees, often with fat stems or a caudex. The family is found worldwide in tropical to arid regions and is reknown for the strong aromatic oils present in the leaves and bark of virtually every species. In fact, these scents were so coveted in ancient times that probably the most famous biblical story of all involves two members of this family. Namely that the gifts supposedly given to baby Jesus (aside from gold) were Frankincense and Myrrh, both members of the Burseraceae. However, we will not be looking at Old World Burseraceae this month and instead focus on the more local (to us) genus Bursera, which are confined to the New World.

Bursera is a wide spread genus, with a range that extends from Florida, California and Arizona into South America. The nearest location to us in the Los Angeles area to see native Bursera, specifically *Bursera microphylla*, is Anza Borrego State Park south of Palm Springs. You may know it better from the common name "Elephant Tree". Many of the species are beautiful trees



*Bursera microphylla*



*Bursera fagaroides*



Peeling bark of *Bursera simaruba*

with red or brown peeling bark, rarely seen in cultivation. Some of the tree-like species are very vigorous growers, going from a foot to 6 feet or more in a just two years, in a medium size pot. Most Bursera are aromatic, with wonderful woody fragrance from their leaves and bark. Most of the species are worth growing and can be made into show specimens by suitable pruning. Many of the larger species require hard pruning every year to avoid having them turn into trees. Species frequently seen are *Bursera fagaroides* (shown above), *Bursera microphylla*, with very small leaves, *Bursera multijuglans* (with red peeling bark), and *Bursera simplex*. There are many other species from Central and Southern Mexico, and Central America that should be grown and shown.

Bursera does best when watered in the summer in Southern California. They will all tolerate being left unpro-ected, outdoors during the winter rains and can take temperatures down to freezing or slightly below. Any standard succulent mix will do as a potting medium. Growth is much more rapid when they are fed. If grown in an open mix they can take an amazing amount of water in the summer, and will reward the grower with sub-stantial growth and trunk thickening. All of the plants do well when treated as bonsai, and pruned to expose the geometry and structure of the trunk and bark. Planting in the ground will greatly accelerate the growth rate.

P L A N T O F T H E M O N T H  
THELOCACTUS INCLUDING  
HAMATOCACTUS  
B Y K Y L E W I L L I A M S

Thelocactus are spectacularly beautiful cacti with dense multicolor spination, well shaped tubercles, and large colorful flowers. They have been a favorite with collectors since they were first discovered. Thelocactus is a small genus in the cactus family, with only 11 or 12 species. In addition to the species, there are also half a dozen legitimate varieties, and a large number of less legitimate varieties that can be found in reference books and collections. The larger number of questionable varieties is due to variability of some of the species between populations from isolated locations.

Thelocactus are found from Southern Texas through central Mexico, mostly in the Chihuahuan Desert, but extending into brushland and thorn scrub in the western parts of its range, and into the Rio Grande Plains region in Texas. Thelocactus bicolor has the largest range, extending from central Chihuahua in the west into Texas in the north, and as far south as San Luis Potosi. The plants are generally small with prominent spines. They are notable for having big, showy flowers that range in color from white to pink to yellow.



*Dyckia 'Yellow Glow'*



*Dyckia 'Yellow Glow'*



*Dyckia 'Yellow Glow'*



*Dyckia 'Yellow Glow'*

Thelocactus are easily grown, tolerant of heat and moisture, but not cold and moisture. They benefit from protection from being cold and wet, although plants left unprotected during the last several winters survived in good shape. Some species develop fairly large tap roots, and should be planted in deep enough pots to give them room to grow. They are easily propagated from seed, and this is the best way to develop a good collection from different populations. They can also be propagated from offsets, with a cutting allowed to dry, and then replanted.

The relationship between species of Thelocactus and other genera is somewhat uncertain. There is evidence to suggest the genus may need to be broken up, or at least have some species transferred into it. Originally, the genus was split out of Echinocactus, but isn't thought to be especially closely related to it today. Several other genera have been linked to Thelocactus, including Echinomastus, Leuchtenbergia, Glandulicactus, and Ferocactus. In addition the genus Hamatocactus has been bounced around between Thelocactus, Ferocactus, & Hamatocactus with some taxonomists dividing it up between the three, with some species being moved into each genus. More studies of DNA are needed before this can be sorted out. Until then keep calling them Thelocactus and enjoy the plants!



# Winter & Summer Growers

Succulents & Cacti have preferred growing and dormancy seasons for each plant. Some grow in summer and are dormant in winter while some are just the opposite and are actively growing in winter and dormant in summer. The difference is the hours of sunlight in a day and temperature. Keep in mind it is not uncommon for a plant to change its growing habit and revert from being a winter grower to a summer grower and vice-versa.

The season a plant is active is important because the water and nutrient needs change — more is needed while growing and much less is needed while dormant.

Please also keep in mind that with the advent of DNA testing, some plants have had their names changed in recent years, but their growing habits remain the same.

## Winter Growers

These genera are dormant during the hottest summer months. They actually grow during Fall & Spring, and in real Winter months when days are shorter they produce only minimal growth, if any.

ADROMISCHUS	MONANTHES
AEONIUM	NEOHENRICIA
AICHRYSO	OTHONNA
ALOE	PACHYCORMUS
ANACAMPSEROS	PACHYPHYTUM
ASTROLOBA	PACHYVERIA
AVONIA	PELARGONIUM
BOWIEA	PEPEROMIA
BULBINE	PILEA
CERARIA	PORTULACARIA
CONOPHYTUM	SANSEVIERIA
COTYLEDON	SEDUM
CRASSULA	SENECIO
DACTYLOPSIS	SPHALMANTHUS
DIOSCOREA	(PHYLLOBOLUS)
DUDLEYA	STOMATIUM
FOUQUERIA	TALINUM
GASTERIA	TYLECODON
GIBBAEUM	
GRAPTOVERIA	
GREENOVIA	
HAEMANTHUS	
HAWORTHIA	
KALANCHOE	

## Summer Growers

This group is generally regarded as the summer growers. They have adapted to our northern hemisphere cycle and are dormant from November thru February. Many of these will also enter a pseudo rest period during the hottest part of the summer before putting on a final burst of growth in September and October.

ADENIA	JATHROPHA
ADENIUM	LITHOPS
AGAVE	MONADENIUM
ALLUAUDIA	MORINGA
BRACHYSTEMMA	OPERCULICARYA
BURSERIA	PACHYPODIUM
CALIBANUS	PEDILANTHUS
CEROPEGIA	PLUMERIA
CISSUS	PSEUDOLITHOS
CYPHOSTEMMA (MOST)	PTERODISCUS
DIDIERIA	RAPHIONACME
DORSTENIA	SINNINGIA
ECHEVERIA	STAPELIANTHUS
ENCEPHALARTOS	SYNADENIUM
EUPHORBIA	TILLANDSIA
FICUS	TRICHOCAULON
FOCKEA	TRICHODIADEMA
HUERNIA	XEROSICYOS
IBERVILLEA	
IPOMOEA	

# MEMBER BADGES

Please pick up your name badge at our August Meeting!

**Teresa Fisher**  
LACSS

**Beth Fisher**  
LACSS

**Caryn Bielein**  
LACSS

**Corrina Garcia**  
LACSS

**Dennis Gaudenti**  
LACSS

**Kathleen Misko**  
LACSS

**Patrick Lee**  
LACSS

**Kelsey Osterman**  
LACSS

**Kyle Medina**  
LACSS

**Lara Fisher**  
LACSS

**Leslie Raymond**  
LACSS

**Mike Schaper**  
LACSS

**Nick Botelho**  
LACSS

**The Unholy Matrimony**  
LACSS

**Diego Rapp**  
LACSS

**Elizabeth Cacho**  
LACSS

**George Lombard**  
LACSS

**John Fisher**  
LACSS

**Nick Renteria**  
LACSS



# PLANT GIVEAWAY!

Walt and Maxine Wegner were some of the early members of LACSS.

Through their years of membership, they held almost every officer position including being the editor of the newsletter. Walt was very proud of the fact that he produced multiple copies of every issue on time, using an old-fashioned typewriter. Although Walt is no longer with us and Maxine has moved out of town, their house and plants still reside in Woodland Hills. Included in his collection, Walt had almost every hybrid of Bob Schick's Echinopsis hybrid production.

**THEIR DAUGHTER, CHERYL, IS OFFERING TO LACSS MEMBERS A CHANCE TO ACQUIRE SOME OF HIS PLANTS TO ENSURE THE PRESERVATION OF WALT AND MAXINE'S COLLECTION.**

**DATE: SUNDAY, AUGUST 14**

**TIME: 8:00 AM – NOON**

**PLACE: 5149 JEFFDALE AVE., WOODLAND HILLS, 91364**

All of the plants are in the ground. Some are quite large. You will need to supply your own beverages, digging tools, gloves, boxes, buckets, and/or newspaper to carry your new acquisitions.

Reservations and signups are not required. However, as a courtesy, please let me know so I can give a heads up to Cheryl on how many to expect. As a follow-up – The Huntington has a repository of the Schick hybrids. If you go to the Huntington's website and click on "gallery" you will be amazed at the beauty of the Echinopsis hybrid flowers.

See you there,  
Joyce



L A C S S

S A T U R D A Y

# PROGRAM

Join us on **AUGUST 13**, at the  
**SEPULVEDA GARDEN CENTER**,  
where **PETER WALKOWIAK** will be  
speaking to us on soils in person.  
Hope to see you all there!

IF YOU ARE INTERESTED IN ATTENDING,  
PLEASE EMAIL [LEEARC@AOL.COM](mailto:LEEARC@AOL.COM)



# U P C O M I N G CSSA WEBINAR

## PLANTS IN ARID PATAGONIA

## MARCELA FERREYRA

Join us Saturday, August 6th  
at 10:00 a.m. PDT for the next  
in our series of webinars  
featuring experts from  
around the world.

### Click here to register!

Patagonia is the southernmost region in Argentina. The most remarkable feature in this territory is the Andean range that runs along the West side from the North to South. The mountains, under a humid and cold climate, have luxurious forests on the slopes and alpine vegetation on their tops. Far from the mountains, the Extra-Andean Patagonia extends itself till the seashore showing a contrasting landscape, very arid and warm. These changes in the environmental conditions produce a remarkable diversity of plants. Patagonia is home to a quarter of the species in all the country. This lecture will present Patagonia in general, very briefly, and will focus on the Extra-Andean Patagonia plants displaying the most beautiful shrubs, perennial and cactus ordered by colors.

Marcela Ferreyra is a biologist, teacher, and botanical tour guide. Her activities have always been linked to the flora of Patagonia and to environmental education.

She was professor of Vascular Plant Systematics at the National University of Río Negro in Bariloche. She has taught Flora of Patagonia in Tourism and Mountain Guide training courses and Natural Sciences in the Institute of Teacher Training of Bariloche, among other institutions. Today she is retired.

For almost 20 years, she has worked as a botanical guide for groups of visitors who travel through Patagonia to photograph its flora.

She gave numerous training courses on the flora of Patagonia both in Bariloche and in other parts of Patagonia, an activity that she currently continues. She has carried out floristic surveys for the Administration of National Parks of Argentina and for protected areas of several provinces.

She has published scientific and outreach papers on high mountain flora and is the author of several field guides to identify the flora of different environments in Patagonia.



S A V E T H E D A T E



THE HUNTINGTON

# SUCCULENT PLANTS SYMPOSIUM

SATURDAY, 3 SEPTEMBER 2022

9AM — 5PM

ROTHENBERG HALL

\$100

## SPEAKERS INCLUDE:

**JARED MARGULIES**

University of Alabama, Birmingham, Alabama.

*What drives illicit succulents trades and how should the conservation community respond?*

**ROOT GORELICK**

Carleton University, Ottawa, Ontario, Canada.

*Cacti of Anthony Gap, Texas/New Mexico*

**DANIEL MAHR**

University of Wisconsin, Madison, Wisconsin.

*Memorable places and the succulents that live there*

**GUILLERMO RIVERA**

Plant Expeditions, Cordoba, Argentina.

*Exploring the flora of Socotra*

**OLWEN GRACE**

Royal Botanic Gardens, Kew, London,  
Surrey, Great Britain

*Water storage and evolution in the succulent plants of the African continent.*

Registration details will be available on the Huntington website,  
[www.huntington.org](http://www.huntington.org) beginning late July  
FOR MORE INFO: 626-405-3504

## 2022 CACTUS AND SUCCULENT CALENDAR OF UPCOMING EVENTS

- AUG. 5-7      36TH ANNUAL INTERCITY SHOW AND SALE - RESERVATIONS REQUIRED  
PLANT SALES 9AM-5PM DAILY. SHOW OPENS 6-7 9-5      INFO. CALL 626-821-3222  
LA COUNTY ARBORETUM, 301 NO. BALDWIN AVE., ARCADIA, CA.
- SEPT. 3      HUNTINGTON BOTANICAL GARDENS SUCCULENT SYMPOSIUM 9-3 PM  
RESEVRATIONS REQUIRED      ALL DAY AT THE HUNTINGTON 626-405-3504
- OCT. 22-23      PALOMAR CACTUS & SUCCULENT SOCIETY FALL SHOW AND SALE  
TENTATIVELY      SAT 9-5PM, SUN 10-3PM, SAN DIEGO BOTANIC GARDEN  
230 QUAIL GARDENS DRIVE, ENCINITAS, CA  
INFO EVENTCOORDINATOR@PALOMARCACTUS.ORG
- NOV. 4-6      HUNTINGTON FALL PLANT SALE, 10-5PM - RESEVRATIONS REQUIRED  
HUNTINGTON BOTANICAL GARDENS  
1151 OXFORD ROAD, SAN MARINO, CA      INFO 626-405-3504

# NURSERY SPACE

A V A I L A B L E

Nursery space available in Somis, CA. This space is in an agricultural area and is hidden from the road. Space for over 400 flats in an area shared by 3 other longtime LACSS club members. There are 7 sections - most covered by plastic, some by shade cloth and the rest uncovered. This is a month-to-month lease arrangement and we have been here for over 10 years. Includes wood pallets and benches on blocks, dosatron, low agricultural water rates, and friendly neighbors. Rent including water approx \$300/mo. Please email [jgmplants@aol.com](mailto:jgmplants@aol.com) for inquiries.