



CACTUS CHRONICLE

June
2012

Visit Los Angeles Cactus and Succulent Society ONLINE at www.lacss.com

For more information

Contact:

LACSS.contact@gmail.com

Next Meeting: June 7, 2012

Editor: Phyllis Frieze

Contact:

frieze.phyllis@yahoo.com

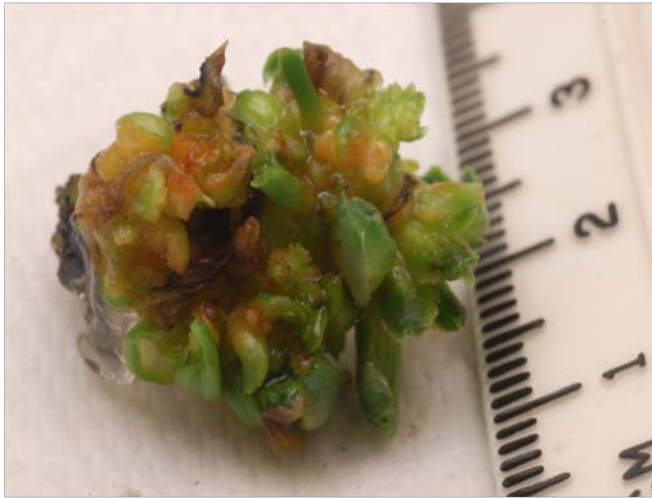


The Los Angeles Cactus & Succulent Society is a non-profit organization. Since 1935 our purpose has been the education, conservation, & study of cacti & succulents. The "Cactus Chronicle" is the official bulletin of the Los Angeles Cactus & Succulent Society, an affiliate of the Cactus & Succulent Society of America, Inc. Any material in the "Cactus Chronicle" may be copied or reproduced by other clubs on our mailing list, or any non-profit organization, provided proper credit is given to the author and the Los Angeles Cactus & Succulent Society.

TISSUE CULTURE

by Tim Harvey

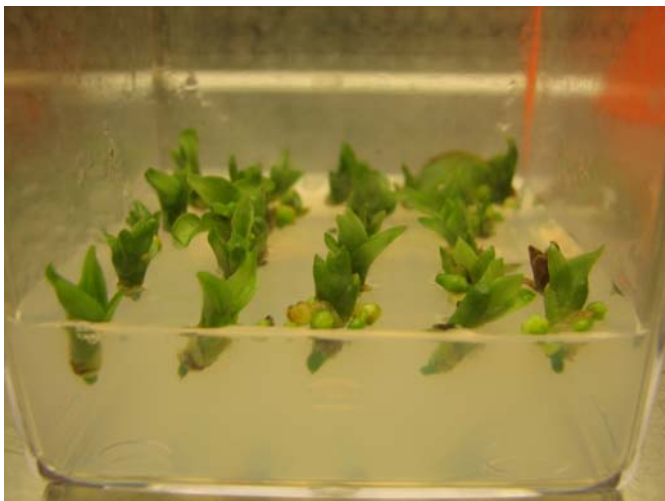
If you have not heard Tim talk, you might not know that he is originally from England. He moved across the pond in 1992, falling a little short of his destination, working in Toronto for a couple of years. He completed the trip to California when he went to work in the Biotechnology industry. He was also able to relocate his cactus collection, started 20 years earlier, to a more favorable climate. Escaping with his morals intact in 2006, he became a full-time propagator and pollinator of his favorite plants, as well as being Editor of the *Cactus and Succulent Journal*. He makes frequent appearances at clubs in Southern California, either as a speaker, or as a vendor at sales. He has a passionate interest in ex-situ conservation through propagation, and was able to use his scientific training to enliven the micro-propagation facility at the Huntington Library. Never able to walk past a plant in flower without trying to pollinate it, he is a keen hybridizer, with the pachycauls, Aloe and bulbs in his collection being defenseless subjects for experimentation.



Succulents in Culture



***Oncidium longifolium*, a xerophytic orchid**



Succulents in Culture



Commercial Acclimation Area



Aloe



Commercial Tissue Culture Growing Room

June 2012

PRESIDENT'S MESSAGE

Dear Fellow Cactus and Succulent Enthusiasts,

The **2012 Drought Tolerant Plant Festival** promises to be our biggest and best show ever. Please refer to the comprehensive Show Schedule in this *Cactus Chronicle* for all the details. If you have enjoyed your membership in LACSS – the programs, the workshops, the raffles, the expertise of members, new friends – then now is your opportunity to give back. We need volunteers throughout the show and here are some of the many ways that you can help:

Thursday, June 7 Meeting – Our show set-up begins at the end of this meeting. In addition to your POM plants and refreshments if your last name begins with the letter **S**, please:

- Bring 1 – 4 of your favorite, unusual plants for display during the show, identified with a show display label. You do not need to bring an entire exhibit (like Sandy's fabulous ones). We will cluster these into a great display. For protecting your plants, security begins Thursday night.
 - Donate one or more of your own special plants for the Saturday drawing.
 - Solicit and bring plants and other raffle items from nurseries and local shops.
- Plan to stay after the meeting to help set up for the show.

Friday, June 8, after 12:00 noon – help set up tables, hang banners, help vendors unload, set up the Membership/Information Booth.

Friday, 5:00 pm – 7:00 pm – Presale for member volunteers

Saturday, June 9 (8:30am – 5:00pm) – staff the Membership/Information Booth, sell memberships, T-shirts, and wreaths, monitor interior displays, work at the staging and repotting station. Coordinate your work time with the speaker times in the Show Schedule.

Saturday evening, 5:30 social half-hour, 6:00 dinner – join friends for Kim's bread pudding, preceded by a delicious BBQ dinner. \$22.00 per person + BYOB. Dinner will be followed by a **live auction** of specimen plants with auctioneer John Martinez.

Sunday, June 10 (8:30am – 4:00pm) – KIDS' Day requires many volunteers to guide visitors through educational exhibits and craft activities. We also need multiple volunteers for the same functions as on Saturday. When the show closes at 4:00, we will need lots of help packing up and breaking down the tables.

Your help at our show enables our club to continue to provide member opportunities, educate the public about our hobby, and build a community of cactus and succulent enthusiasts. If you haven't already signed up to work a bit, please contact Joyce at 818-705-3224 or email her at ropojo@pacbell.net.

Roxie Esterle, President
LACSS.contact@gmail.com





LACSS 2012 Annual Drought Tolerant Plant Festival Show Schedule

The Festival's show, sale, and publicity committees are working overtime to surpass their performance of last year's overwhelming success. The Festival has become more than just a plant show. It has matured into an event that families can enjoy together with activities for everyone. The following is a run-down of the weekend.

Thursday, June 7, 2012 Set Up

Table delivery and set up
Kitchen
Exterior display boxes set up
Interior room set up following meeting



Interior Displays
and
Book Sales

Friday June 8, 2012, Load-in time 12:00 PM

Interior display SET UP

Members' displays – Bring in an exhibit or 1 - 4 interesting/unusual cacti or succulents for display on this day

Bromeliad and Bonsai Societies displays

Book Sales

Silent Auction

Kid's Educational displays

Exterior set up

Vendor load-in with booth numbers

Install display gardens:

Touchable Garden

General Cacti and Succulent Garden

Cacti and Succulents with associated

plants

Exotic Garden

Cactus Couch

Banner hanging

LACSS Information Booth Preparation

Club information and membership sign up

Cacti and Succulent information

T-shirt sales

Wreath Sales

Drawing Ticket Sales

Lectures Notifications Times and Speakers

Beverage Sales

Distribution of information from other Societies

Kiosk (bulletin board) set-up Up-coming Cactus and Succulent events

List of participating vendors offering member discounts by booth numbers



Member volunteers pre-sale 5:00 pm – 7:00pm



Saturday June 9, 2012, 9:00 am to 5:00 pm

Vendor sales - See Information booth kiosk for list of vendors offering a 10% discount to members.

LACSS Staging Booth

Club members provide the services to pot, stage, or create a container garden. The customer provides the plant, pot, top-dressing and any props they desire in their staged plant. The Club provides the soil. The cost will be by pot size approximately \$3.00 - \$25.00, and proceeds go to LACSS.

Public Silent Auction 10:00 am – 3:50 pm (winners need not be present).

All members are invited to contribute specimen plants or plant-related items for the silent auction. Space is limited to 25-30 quality items. There will be a 70/30 split (70% to the vendor and 30% to the club) if we need to purchase additional material.

Lunch: provided to all vendors and volunteers

Speakers:

10:00 – 11:00	MATT MAGGIO	Container Gardening with Succulents
11:30 – 12:30	ANDY SIEKKINEN Sponsor: San Fernando Valley Bromeliad Society	Caring for and Staging Tillandsias
1:00 – 2:00	LILI SINGER Sponsor: Theodore Payne Foundation	California Natives in the Garden
2:30 – 3:30	MIKE BUCKNER	The Art of Staging Succulents

Festival Drawings: 2:00 pm and 4:00 pm with plant and garden-related donations from members and local businesses. Proceeds go directly to Cactus Garden refurbishing.

Dinner for Members and Vendors : 5:30 Socialize 6:00 Dinner \$22.00 per person
Sign up early at the June Meeting and receive a ticket for a special drawing.

Three different salads plus Tri-tip and Chicken, Chili beans, Garlic bread and LACSS's famous bread pudding. BYOB, please.

Dinner live auction

Following the dinner, Auctioneer John Martinez will present 25 very special plants or plant-related items with a full range of prices. Open to all LACSS members and families. Items for the auction are by invitation only (70/30 split)

Sunday June 10, 2012, 9:00 am – 4:00 pm

Vendor Sales continue

Drawings offered by the Bromeliad and Bonsai Societies

Lunch provided to all vendors and volunteers

KIDS' DAY

KIDS' DAY introduces young people to the world of Cacti and Succulents. To begin, a volunteer leads a group of kids through indoor educational displays:

- Station 1 "What is a Cactus?"
- Station 2 "What is a Succulent?"
- Station 3 "Mimicry Plants"
- Station 4 Hybridizing
- Station 5 Crest and Monstrose plant forms
- Station 6 Plants under a magnifying glass
- Station 7 Propagation
- Station 8 "What Pollinates Me?"

After the tour, the volunteer will lead visit children through the Craft Area under the shady canopy of the trees.

- Station 1 Paint a Pot
- Station 2 Plant a Pot
- Station 3 Coloring
- Station 4 Games
- Station 5 Clay Creations

BREAK DOWN BEGINS AT 4:00 PM

All hands on deck!!!!!!

Thank you



Exterior Displays



Workshops

Our own LACSS Show and Sale will be over soon. Hopefully you've been planning ahead for the CSSA 47th Annual Show and Sale on June 29-30 and July 1. Your show plants should be selected and restaged if necessary. There is only one class, OPEN, but don't let that deter you from showing a nice plant regardless of your level in the LACSS POM showings. Sometimes there are only one or two entries so it is not as hard as you think to win a trophy. REMEMBER not to water your plants the day before you bring them in as it tends to stain the tablecloths. As an additional bonus, if you enter plants in the show, you'll receive a free show T-shirt as well as free admission to the Gardens.

Barbara Hall is the Show Chair and she will bring show schedules and entry tags to the next LACSS meeting. Help is needed for setup Thursday morning June 28 and all day during the sale on Friday thru Sunday. All volunteers will also get a free show T-shirt as well as free admission to the Gardens.

A great opportunity to acquire exceptional specimens is to attend the dinner and lively auction. Sign up early, spaces are limited and we don't want you to miss an enjoyable evening. Plan to attend to see the great show plants, get some ideas on how to stage your plants and purchase some nice sale plants from the vendors.

I look forward to seeing you at the 47th Annual CSSA Show and Sale.

John Matthews, CSSA Representative

IMPORTANT

Have you contacted Joyce Schumann to sign up to volunteer at our

***Tolerant Plant Festival
June 9 and 10, 2012***

We need many volunteers to help coordinate, publicize, and host activities during our Annual Drought Tolerant Plant Festival. This is OUR special annual event, please see Joyce at the meeting to sign up and be an active part of this exciting event. Joyce can be contacted at her email address ropojo@pac.bell.net or by phone, 818-705-3224.

!!! ATTENTION !!!

ALL MEMBERS

The Show and Sale is upon us. We want to remind everyone of the indoor display tables available to our members who wish to show off one to four of their favorite plants. There will be one table dedicated for cacti and one table for succulents. You may put plants on both tables if you wish. Information accompanying your plants should include name of plant, why it is your favorite, some background such as, how long you have had the plant, how you grow it (water, light, fertilizer, etc.) and/or anything else that would be of interest to our visitors.

Please email John Martinez or Joyce (or see us at the June meeting) to let us know that you will be participating in the single-table display. We think this is an exciting way for each of you to participate in our Club Show.

We look forward to seeing you there.

Co-Chairs

Joyce Schumann and John Martinez



JUNE EVENTS

- June 2 & 3** San Diego Cactus & Succulent Society Summer Show & Sale
Balboa Park, Room 101, San Diego, CA
Info: (858) 382-1797
- June 9 & 10** Los Angeles Cactus & Succulent Society Show & Sale, June
11th 9am - 5pm, 12th 9am - 3:30pm
Sepulveda Garden Center 16633 Magnolia Blvd., Encino, CA
Info: email: LACSS.Contact@gmail.com
- June 29-July 1** CSSA Annual Show & Sale –
Huntington Botanical Gardens 1151 Oxford Road, San Marino,
CA
Show Opens-June 30th - July 1st--Free to the Public, Info: (626)
405-2160 or 2277

LACSS WELCOMES MAY'S NEW MEMBERS

Lillian Minotti
Kyle Williams



LOS ANGELES CACTUS AND SUCCULENT SOCIETY
NEW PLANT OF THE MONTH POLICIES for 2012

Competition Divisions:

- Rookie: 0 – 25 combined 1st, 2nd, or 3rd place “rookie” award points
Novice: 1 - 100 combined 1st, 2nd, or 3rd place “novice” award points
Advanced: Over 100 combined 1st, 2nd, or 3rd place “novice” award points
Master/Open: Any experienced grower may compete in this division, but this required for individuals who **sell** at shows outside of LACSS.

Submissions:

Members may submit up to three plants in each designated monthly cactus and succulent category. In the Advanced and Master/Open divisions, members must have cared for their plants for at least 1 year. In the Novice division, the ownership requirement is 6 months. Rookies may show newly purchased plants. Entries should be labeled and placed on the display table by 7:00 pm.

Judging Criteria:

Plants are evaluated according to the following guidelines:

Condition (health, form, damage-free)	50%
Maturity and size	25%
Staging (complementary container, top dressing, composition)	20%
Nomenclature (identification and label)	5%

Other factors include rarity, growing difficulty, and whether or not the plant is in flower.

Awards:

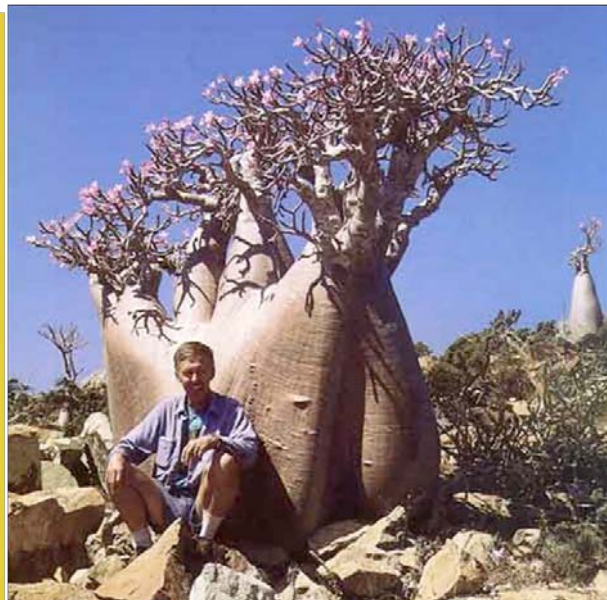
First place	6 points
Second place	3 points
Third place	2 points
Other submissions	1 point per plant to acknowledge entry

Entry slips are collected by the 2nd Vice President in charge of Plant of the Month who coordinates tabulation, record keeping, and publication in the *Cactus Chronicle*.

Annual cumulative prizes are awarded at the **holiday party in December** to the top three scorers in each division for cacti and for succulents. Additional prizes are awarded for overall total scores from highest to lowest across all divisions. Every individual who has brought plants during the year is acknowledged with a prize. Individuals who “graduate” from one division to the next for the following year will also be recognized.

Plant-of-the-Month

	<i>Cacti</i>	<i>Succulent</i>
January	Mammillaria	Othonna & Senecio
February	Monstrose and Crest	Monstrose and Crest
March	Variegates	Variegates
April	Echinocereus	Haworthia
May	Echinopsis	Gasteria
June	Cephalium bearing cacti	Adenium
July	Eriosyce	Cyphostemma
August	Favorite	Favorite
September	Gymnocalycium	Euphorbia - Caudiciform Type
October	Parodia (includes Notocactus)	Stemless Mesembs - no Lithops
November	Frailea & Blossfeldia	Tylecodon
December	<i>Holiday Party</i>	<i>Holiday Party</i>



Plant of the Month - May Winners

Plant of the Month - May Winners		
Rookie Division		
Succulent -		
Award	Name	Plant
First	None	
Second	None	
Third	None	
Cactus -		
First	None	
Second	None	
Third	None	
Novice Division		
Succulent -		
Award	Name	Plant
First	Scott Schaffer	Gasteria "Pacita"
Second	Scott Schaffer	Gasteria armstrongii x pillansi
Second	John Martinez	Gasteria pillansii
Third	Bob Thille	Gasteria hybrid
Third	Ronit Weiss	Gasteria armstrongii
Cactus -		
First	Ronit Weiss	Echinopsis sp.
Second	None	
Third	None	
Advanced Division		
Succulent -		
Award	Name	Plant
First	Kim Thorpe	Gasteria armstrongii
Second	Frank White	Gasteria gracilis
Third	Kim Thorpe	Gasteria "Gracilas"
Third	Sandy Chase	Gasteria armstrongii
Cactus -		
First	Kim Thorpe	Echinopsis sp crest
Second	Kim Thorpe	Lobivia ?
Third	Kim Thorpe	Echinopsis subdenudata
Open Division		
Succulent -		
Award	Name	Plant
First	John Matthews	Gastrolea "Shining Star"
Second	John Matthews	Gasteraloe
Third	None	
Cactus -		
First	John Matthews	Echinopsis arachnacantha
Second	John Matthews	Echinopsis arachnacantha ssp torrecillase
Third	None	
Participant - Non-Awards		
	Name	Plants
	Ronit Weiss	Gasteria vlokii
	Ronit Weiss	Gasteria cross
	Terry Brant	Gasteria glomerata
	Scott Schaffer	Gasteria "Sol"
	John Martinez	Gasteria "Gold Mine"
	John Martinez	Gasteria glauca

LACSS Membership Form (Please print the following information)

Name _____ Phone _____

Name of Additional Members: _____

Address _____

City, State, Zip Code _____

E-Mail Address _____

Send me the newsletter by E-Mail Send me the newsletter by U.S. Mail(\$5 extra fee)

Send me a plastic name badge (\$6.50 each)

Type of Membership: New Member Renewal

- Single Membership \$20 annually \$10 1/2 year (July or after)
- Family Membership \$25 annually \$12.50 1/2 year (July or after)
- Newsletter by U.S. Mail \$5 fee in addition to the membership charge
- Cash Check: number _____

Special Interests _____

Monthly Meeting Refreshments

Each month different members whose last name begins in a particular letter are requested to furnish refreshments for the club. Below is the list, by month, for 2012.

January	T U V W X Y Z	July	T U V W X Y Z
February	A B C D	August	A B C D
March	E F G H	September	E F G H
April	I J K L M	October	I J K L M
May	N O P Q R	November	N O P R
June	S	December	HOLIDAY PARTY

Members were selected by the approximate number of members attending each meeting.

Refreshments for the month of June are members whose last names begin in
S

Los Angeles Cactus and Succulent Society Cactus of the Month June 2012 Cacti with Cephalium

A *Melocactus* was very likely the first cactus seen by a European explorer, and certainly one of the first to be brought back and successfully grown. They were known in English collections by the late 16th century, less than 60 years after Columbus' first voyage.



Melocactus azureus entered by Rosemarie Sauer in the 2003 CSSA Show

Melocactus are one of the many genera of cacti found in Brazil an enormous country with many eco-systems and climates. Many of the genera are typically associated with this country (including Melocactus mentioned above) such as Buiningia, Discocatus, Frailia, Rhipsalis, Ubelmannia, and Zygocactus. Other genera are less often associated with the Brazilian ecology but thrive in habitats throughout this country include Echinopsis, Monvillea, Opuntia, Parodia, and Wigginsia. In fact Brazil is how to over 60 genera of cacti that cover almost the entire geographic

area of this country. Not mentioned yet but noteworthy are the plethora of Epiphyllum species found in the tropical areas of Brazil and the Brazalicereus native this country only.



Melocactus azureus

Melocactus are immediately recognizable by the large cephalium that develops on mature plants. *Melocactus* grow as normal appearing, but flowerless, globular cacti until they reach maturity. This can take from 6 to 15 years in cultivation, with a greater range in habitat. Once they reach maturity, the body stops growing vigorously (it still grows slowly). Most of the plant energy goes into producing a cylindrical flowering and fruiting structure known as a cephalium. This is usually white, with short hairs of yellow, orange or red. As the years go by, the cephalium becomes more cylindrical, with the base becoming more colorful. The flowers are usually a red-purple, and the fruits are almost always a

bright red, to attract birds. With age, the cephalium can grow to 18 inches or more in height, occasionally bifurcating or trifurcating.

Melocactus are native to a large region, Brazil to Southern Mexico, including a good part of the Caribbean. As might be expected, cacti from the tropical regions, particularly coastal regions are sensitive to cold and wet. Cold and wet conditions can cause scarring of the body, which usually appears as brown or tan lesions on the skin. A few of these are unavoidable, but a badly scarred plant quickly becomes unsightly. At the same time, almost all of the *Melocactus* expect high humidity and a higher moisture level than might be expected. Many grow within sight of the ocean, or in some of the more tropical and humid regions of Brazil. They like water, but demand good drainage.

Melocactus are generally solitary, so the only means of propagation is through seeds. Fortunately they produce plenty of seed, and these germinate readily, particularly when the weather is warm. Keep the seedlings protected from direct sun, and moist until fairly large. Although it is several years from seed to a flowering plant, most of the *Melocactus* have magnificent spination and vividly colored bodies, which make keeping them a pleasant task.

Endemic to Southern Brazil, *Discocactus* are prized by the collector if for no other reason that the elegant wooly cephalium the plants develop in maturity. Similar to the *Melocactus*, flowers originate from the cephalium which can reach two or more inches in height



***Discocactus psuedoinsignis* in a sandy habitat**



Discocactus bueneri



Discocactus horstii

Reference:

D. Hunt, **The New Cactus Lexicon**
The Brazilian Cactus Project (web),
Marlon Machado

Tom Glavich April 2004
 Steve Frieze, June 2012

Los Angeles Cactus and Succulent Society Succulent of the Month June 2012 - *Adenium*

Adenium is a member of the *Apocynaceae*, and a relative of *Pachypodium*, *Oleander*, and *Vinca*. The *Apocynaceae* is home to many showy flowering plants used for ornamental and medicinal purposes. *Oleander* is a staple of much of Southern California Gardening; *Vinca* is grown around the world

Adeniums are native to Africa and very large clumps of *Adenium obesum* can be found in selected areas of Tanzania. The plants found in sub-Saharan Africa typically have thick stems and an enlarged base and root system known as the caudex. Propagation occurs most successfully from tip cuttings (about 5 inches from the growing point of a branch) although many wholesalers now generate new crops from seeds.



Adenium obesum (Tanzanian habitat
photo-S. Frieze

Adeniums are relatively easy to grow if you follow a couple of important rules. *Adeniums* should receive absolutely no moisture from November through March when they go dormant. Resume watering when you observe leaves emerging from existing branches. They should also be kept

warm during this period of time either by placing them in a green house or next to a house wall that receives heat from a climate control system. Some growers place their

plants in their garages in late fall to force dormancy, and protect them from cold and damp. During the growing season, *Adeniums* require good fertilizer, and lots of water. *Adeniums* are being hybridized for the caudex shape and for flower color. Hobbyists seek out and treasure large caudexes on the *Adeniums* that they exhibit.



Adenium obesum (Tanzanian habitat
photo-S. Frieze

Adenium somalense is another outstanding caudiciform plant found in an area from Somalia down through Kenya and Tanzania. The leaves of this plant are greenish with a white vein down the middle of the leaf. The flowers are smaller than those for *Adenium obesum* and are pinkish to white at the base of the blossom.



Adenium somalense

Adenium arabicum is another species that produces a large caudex and a plethora of lovely pink blossoms that rival any of the other plants found in this genus. You can distinguish *Adenium obesum* from *arabicum* by the texture of the bottom of *arabicum* leaves (it has a feathery feel to it).



Adenium arabicum

References

G. Rowley, **Caudiciform and Pachycaul Succulents**

M Dimmitt, G. Josephs, D. Palzkill, **Adenium: Sculptural Elegance, Floral Extravagance**

Tom Glavich April 2003
Edited by Steve Frieze, June 2012

General Meeting starts at 7:00 PM on the **first Thursday** of the month at the Sepulveda Garden Center located at 16633 Magnolia Blvd. in Encino between Hayvenhurst and Balboa.
Set-up and social hour starts at 6:00 PM.

Bring a smile! Make new friends! **GUESTS ARE ALWAYS WELCOME!**

Visit Los Angeles Cactus and Succulent Society *ONLINE* at www.lacss.com

Upcoming Program for

June 2012

Tissue Culture

Tim Harvey

First Class Mail

Sepulveda Garden Ctr. 16633 Magnolia Bl. Encino

Next Meeting:
June 7, 2012

RETURN SERVICE REQUESTED
PO Box 280581, Northridge, CA 91328

CACTUS & SUCULENT SOCIETY
June 2012
CACTUS CHRONICLE

