



CACTUS CHRONICLE

May
2012

Visit Los Angeles Cactus and Succulent Society ONLINE at www.lacss.com

For more information

Contact:

LACSS.contact@gmail.com

Next Meeting: May 3, 2012

Editor: Phyllis Frieze

Contact:

frieze.phyllis@yahoo.com



The Los Angeles Cactus & Succulent Society is a non-profit organization. Since 1935 our purpose has been the education, conservation, & study of cacti & succulents. The "Cactus Chronicle" is the official bulletin of the Los Angeles Cactus & Succulent Society, an affiliate of the Cactus & Succulent Society of America, Inc. Any material in the "Cactus Chronicle" may be copied or reproduced by other clubs on our mailing list, or any non-profit organization, provided proper credit is given to the author and the Los Angeles Cactus & Succulent Society.

Staging and Repotting Workshop Improve Your Collection

Our May meeting program will consist of a demonstration on how to stage your precious plants for an exhibition or show. Members will get practical information on a variety of issues that should be taken into consideration when exhibiting or entering plants in a competition such as the Plant of the Month "mini" show or our June show and sale, CSSA sale and show on June 29-July 1 and the Inter City sale and show on August 11 and 12.

We will enjoy a hands-on workshop that will help you get prepared for the coming shows as well as improve our collections and knowledge. It is also a great opportunity to learn more about other members of the Club and what plants they collect.

Artie Chavez and Steve Frieze (both former presidents of the club) will each take turns staging both cacti and succulents. You will be able to obtain assistance on the following:

- Choosing the right type of pot for your plant
- Learning how to select a pot that matches the size and shape of the plant you are staging
- Selecting the proper top dressing
- Determining if staging rocks are needed in your arrangement
- Choosing the front of the plant
- Deciding on whether your plant needs to be trimmed or pruned to achieve the look you want.

This is the ideal meeting to discuss and prepare which of your plants should be entered in the LACSS June Show (June 9th & 10th) and the Intercity Show (August 13th & 14th)! We encourage you to scour your collection and choose a specimen or two to have staged on this evening.

The success of this program depends on us, the members. Be sure to bring the following to the May meeting:

PLANTS THAT NEED STAGING - if you are unsure about a plant, bring it anyway - Artie and Steve can work wonders with just about any plant.

POTS IN WHICH YOU WISH TO HAVE YOUR PLANTS STAGED - pots will be available for purchase if you are not able to secure them before the meeting

All other materials will be provided by the workshop leaders including top dressing, rocks, and soil. See you at the meeting!

May 2012

PRESIDENT'S MESSAGE

Spring has arrived with its multitude of garden projects. And if you haven't identified enough projects to keep you busy, you'll certainly come up with new ideas from this month's workshop. Bring your own plants for staging, seed planting, propagating, and more.

June Show

I hope everyone is saving June 9th and 10th for our own spring sale. We need help in the following ways:

- Designing an educational exhibit of your own plants for the interior exhibit
- Helping exhibitors set up on Friday afternoon, June 8th
- Hospitality: "Ask me", new member sign-ups
- LACSS Sales of Books, T-shirts, and cactus wreaths
- Assisting guest speakers with logistics, set up on Saturday
- Supporting "Kactus Kids" activities on Sunday
- Providing a plant holding area for shoppers
- Taking digital photographs to document for *Cactus Chronicle*, website and FaceBook

Sign-ups for specific jobs and times will be posted at our May meeting. Keep in mind the schedule of speakers, and please call John Martinez if you have further questions:

Matt Maggio	Container Gardening with Succulents	9:45 - 11:15
Mike Buckner	The Art of Staging Succulents	11:15 - 12:45
Lily Singer	California Natives in the Garden	12:45 - 2:15
David Bassani	Gardening with Bromeliads	2:15 - 3:35

Don't forget that there will be a pre-sale for club members on Friday afternoon.

Succulent Wreaths

Our succulent wreaths will be for sale during the show with all proceeds going directly to LACSS. A giant thank you to Kathleen Misko for hosting two wreathing-making parties and to the many members who enjoyed creating, socializing, and feasting: Roger, Sylvia, Cheryl and Frank, Danielle, Bob, Phil, Artie and Kim, Norma, Susan, Ilona, Marquita, Stacey, Ernie, and Rivka (many of whom came twice!). Hope I didn't miss anyone.

Sepulveda Garden Clean up Day

We are committed to refurbishing the Cactus and Succulent Garden at the Magnolia Garden Center, and we now have a date on the calendar to make this happen before the show. Please plan to join us in your work clothes with some basic pruning and weeding tools at **9:00 AM on Saturday, May 26**. Our club will provide refreshments for all who attend.

Roxie Esterle
President
LACSS.contact@gmail.com





Succulent designer Jeff Karsner had fond garden memories growing up in Maryland amidst his father's bonsai collection and his mother's rockery. But it wasn't until he moved out west that his own deep passion for plants was triggered by the cacti and succulents he found there.

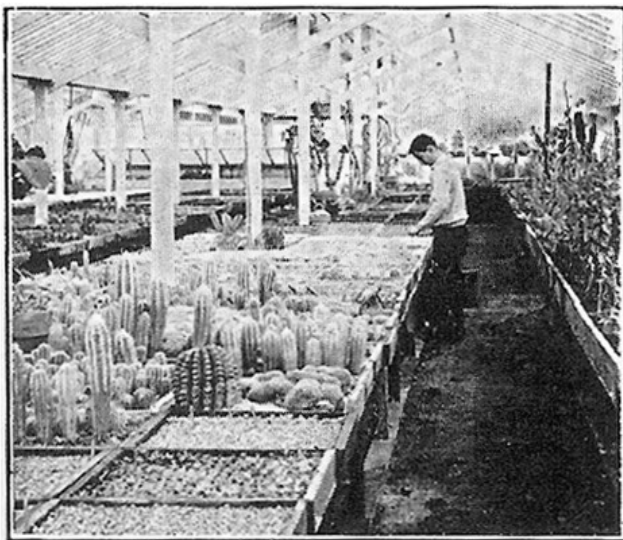
Jeff was President of the LACSS in 2009 and worked at the Huntington Library's Desert Garden as Head Gardener of the Children's Garden. There, the extensive collection of cacti and succulents provided a vast source of inspiration.

Complementing Jeff's creative succulent work was his active involvement in the puppetry world. He developed a puppet show to promote low-water gardening featuring characters made out of living succulents. Jeff sat on the board of the Los Angeles Guild of Puppetry since 2002. Before discovering the joys of succulent gardening, Jeff also worked as a story editor at PBS, CBS, and Warner Brothers.

Jeff will be missed by his many friends and colleagues. A bench has been dedicated in his honor at the Huntington.

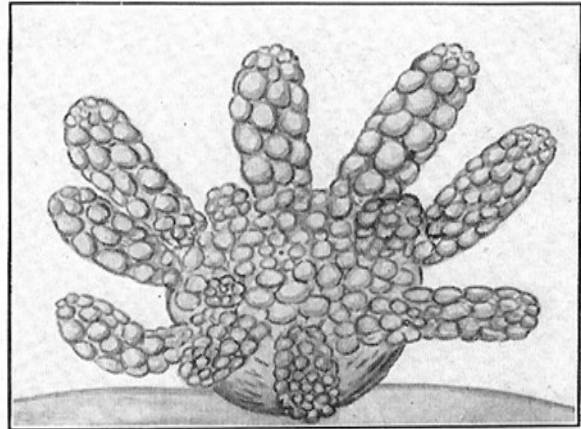
**Post From Petioles Past:
Harry Johnson's Field of Dreams**
Nils Schirmmacher

A stroll among the tables of plants at a first-rate nursery often makes for an inspiring jaunt: the quantity and variety of a professional grower's stock can be a wellspring for the novice cactiphile, providing an overview that helps shape their own budding collections. Just as motivating are the visual displays that are created by good nurseries. Employing aesthetics that range from surrealist fantasy to the rustic austerity of bonsai, their compositions demonstrate the artistic potential of merging plant, container, and top dressing.

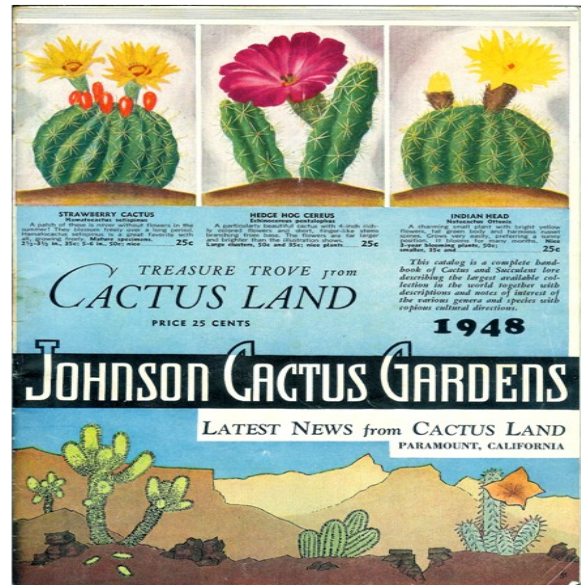


From the 1920s through the 1960s, Harry Johnson's Cactus Gardens provided such inspiration. Located southeast of Los Angeles in the city of Paramount, the Johnson Gardens boasted ten acres of greenhouses, cold frames, and lathouses in which two million plants were grown. An outdoor demonstration garden was nestled amongst bungalows that served as office and home for Harry and his

family, its combination of cacti, succulents and drought-tolerant shrubs appearing just as savvy as today's water-conscious landscaping.



The lavish catalogs that Mr. Johnson produced attempted to translate the excitement of visiting his nursery onto the printed page. Loaded with illustrations, the catalogs featured photographs and paintings drafted by Mr. Johnson's own hand. Harry's botanical art accurately conveyed each plant's features in a style that was sparse on detail, and endearing in gesture.





The four-color printing process that was used to produce the catalogs added to their vibrancy, creating bold swatches of crimson and coral that leapt from the petals of blooming cacti to reverberate within the reader's field of vision.

Scattered throughout the 1948 catalog are images of women posing with their collections; photos footnoted with captions that testified to the nursery's speedy delivery of vigorous specimens. Just why these endorsements were made exclusively by females is a mystery: was this a true representation of Mr. Johnson's customers or, was Harry using sex appeal to sell his plants?

While it is disheartening to consider that the inherent allure of Mr. Johnson's inventory needed to be bolstered with fresh-faced spokes models, it should be kept in mind that a plant's beauty is, in part, a product of its desire to reproduce: a desire that has been known to periodically motivate *Homo sapiens* as well.



Reproduced here is a sampling of images from the Johnson Cactus Gardens catalog, attesting to its compelling mix of color and graphics. Little effort is required to project our contemporary experience of a favorite nursery onto these pictures, and find ourselves at Johnson's Gardens on a sunny afternoon in decades past.



Even though our own LACSS Show and Sale is our next big event on June 9th and 10th at the Sepulveda Gardens, it is not too early to start planning for the CSSA 47th Annual Show and Sale on June 29-30 and July 1. Starting early to think about what plants you want to enter and decide if you want to restage them will give you time to be sure your plants are clean, make a pot selection that complements the plan and check your top dressing.

There is only one class, OPEN, but don't let that deter you from showing a nice plant regardless of your level in the LACSS POM showings. There will be a show, dinner and auction which is a great opportunity to acquire exceptional specimens (sign up early).

Barbara Hall is the Show Chair and she will bring show schedules and entry tags to the May and June LACSS meetings. Help is needed for setup Thursday morning June 28 and all day during the sale on Friday thru Sunday. All volunteers will get free admission to the Gardens.

John Matthews, CSSA representative

IMPORTANT

Volunteers needed for LACSS Annual Drought Tolerant Plant Festival June 9 and 10, 2012

We need many volunteers to help coordinate, publicize, and host activities during our Annual Drought Tolerant Plant Festival. If you are eager to serve and be an active part of this exciting event, please contact Joyce Schumann at 818-705-3224 or send an email to ropojo@pac.bell.net.

**WREATH MAKING AT
KATHLEEN MISKO'S HOME**
Flat donated by Gene and Laura Oster



Roger Cohen
and
Stacey Phelps
enjoying their
time at
Kathleen's
Wreath
Workshop.



LACSS CLUB'S NEW LOGO
Created and Designed by KimThorpe



MAY EVENTS

May 5 & 6

Sunset Cactus & Succulent Show & Sale
Info: 310-822-1783

May 13

Huntington Plant Sales 10am-5pm
Huntington Botanical Gardens
1151 Oxford Road, San Marino
Info: 626-405-2160

May 18 & 19

31st Gates Cactus & Succulent Sale 9am-4pm
Jurupa Mountains Cultural Center
7621 Granite Hill Drive, Glen Avon
Info: 951-360-8802

May 26 & 27

Central Coast Cactus & Succulent Society
Annual Sale & Show 10am-4pm
Ludwick Center, 864 Santa Rosa, San Luis Obispo
Info: 805-237-2054

LOS ANGELES CACTUS AND SUCCULENT SOCIETY
NEW PLANT OF THE MONTH POLICIES for 2012

Competition Divisions:

Rookie: 0 – 25 combined 1st, 2nd, or 3rd place “rookie” award points
Novice: 1 - 100 combined 1st, 2nd, or 3rd place “novice” award points
Advanced: Over 100 combined 1st, 2nd, or 3rd place “novice” award points
Master/Open: Any experienced grower may compete in this division, but this required for individuals who **sell** at shows outside of LACSS.

Submissions:

Members may submit up to three plants in each designated monthly cactus and succulent category. In the Advanced and Master/Open divisions, members must have cared for their plants for at least 1 year. In the Novice division, the ownership requirement is 6 months. Rookies may show newly purchased plants. Entries should be labeled and placed on the display table by 7:00 pm.

Judging Criteria:

Plants are evaluated according to the following guidelines:

Condition (health, form, damage-free)	50%
Maturity and size	25%
Staging (complementary container, top dressing, composition)	20%
Nomenclature (identification and label)	5%

Other factors include rarity, growing difficulty, and whether or not the plant is in flower.

Awards:

First place	6 points
Second place	3 points
Third place	2 points
Other submissions	1 point per plant to acknowledge entry

Entry slips are collected by the 2nd Vice President in charge of Plant of the Month who coordinates tabulation, record keeping, and publication in the *Cactus Chronicle*.

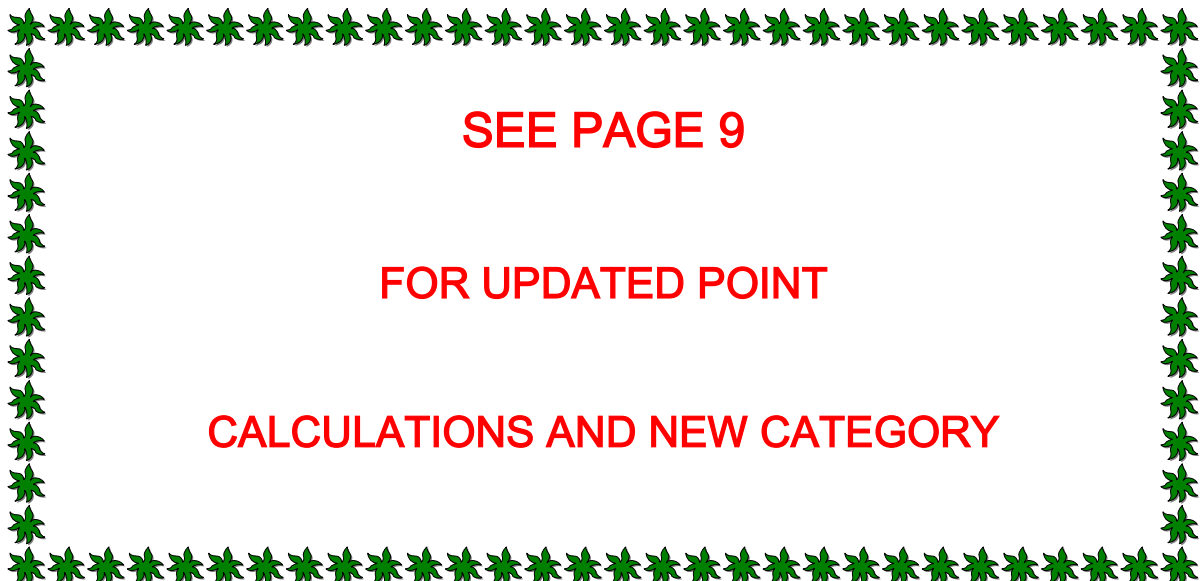
Annual cumulative prizes are awarded at the **holiday party in December** to the top three scorers in each division for cacti and for succulents. Additional prizes are awarded for overall total scores from highest to lowest across all divisions. Every individual who has brought plants during the year is acknowledged with a prize. Individuals who “graduate” from one division to the next for the following year will also be recognized.

Plant of the Month - April Winners

Rookie Division		
Succulent - Haworthia		
Award	Name	Plant
First	Danielle Duboff	Haworthia
Second	Marquita Ellias	Haworthia attenuata
Third	Danielle Duboff	Haworthia
Cactus - Echinocereus		
First	None	
Second	None	
Third	None	
Novice Division		
Succulent - Haworthia		
Award	Name	Plant
First	Sylvia Strehlo	Haworthia truncata
Second	Ronit Weiss	Haworthia venosa ssp tesselata
Second	Scott Schaffer	Haworthia truncata
Third	John Martinez	Haworthia poellnitziana
Third	Scott Schaffer	Haworthia maughanii variegata
Cactus - Echinocereus		
First	Rio Cernik	Echinocereus baileyi
Second	Ronit Weiss	Echinocereus sp.
Third	Rio Cernik	Echinocereus engelmannii
Third		
Advanced Division		
Succulent - Haworthia		
Award	Name	Plant
First	Kim Thorpe	Haworthia truncata hybrid
First	Norma Lewis	Haworthia truncata
Second	Kim Thorpe	Haworthia emelyae var comptoniana
Second	Frank White	Haworthia cymbaformis
Third	Norma Lewis	Haworthia 'red veins'
Cactus - Echinocereus		
First	Kim Thorpe	Echinocereus sp.
Second	Kim Thorpe	Echinocereus engelmannii
Third	Cheryl White	Echinocereus pectinatus
Third	Kim Thorpe	Echinocereus lauii
Open Division		
Succulent - Haworthia		
Award	Name	Plant
First	None	
Second	None	
Third	None	
Cactus - Echinocereus		
First	None	
Second	None	
Third	None	
Participant - Non-Awards		
	Name	Plants
	Rio	E Laui
	Sylvia Strehlo	H. splendez
	Scott Schaffer	H pumila variegata
	Sylvia Strehlo	H. emalyae
	Ronit Weiss	H venessa
	Ronit Weiss	H koelmaniorum

Plant-of-the-Month

	<i>Cacti</i>	<i>Succulent</i>
January	Mammillaria	Othonna & Senecio
February	Monstrose and Crest	Monstrose and Crest
March	Variegates	Variegates
April	Echinocereus	Haworthia
May	Echinopsis	Gasteria
June	Cephalium bearing cacti	Adenium
July	Eriosyce	Cyphostemma
August	Favorite	Favorite
September	Gymnocalycium	Euphorbia - Caudiciform Type
October	Parodia (includes Notocactus)	Stemless Mesembs - no Lithops
November	Frailea & Blossfeldia	Tylecodon
December	<i>Holiday Party</i>	<i>Holiday Party</i>



SEE PAGE 9

FOR UPDATED POINT

CALCULATIONS AND NEW CATEGORY

EXCITING NEW ADDITION
TO OUR
CHRONICLE

Editor's Error...Thank you Joan Citron

This addition cannot happen without your participation.

We want to feature your plant/s in our Chronicle every month!

All you need do is take a picture of your plant, let us know who you are, tell what kind it is, approximate age, how was it grown, seed, root, etc. Tell a little about the species i.e. where it comes from, how it is grown, winter grower, summer grower, best care, type of soil.

Your picture and written information will be featured in our Chronicle.

Our first viewing was submitted by Joyce Citron. Photographed by Jorge Ochoa.



LACSS Membership Form (Please print the following information)

Name _____ Phone _____

Name of Additional Members: _____

Address _____

City, State, Zip Code _____

E-Mail Address _____

Send me the newsletter by E-Mail Send me the newsletter by U.S. Mail(\$5 extra fee)

Send me a plastic name badge (\$6.50 each)

Type of Membership: New Member Renewal

- Single Membership \$20 annually \$10 1/2 year (July or after)
- Family Membership \$25 annually \$12.50 1/2 year (July or after)
- Newsletter by U.S. Mail \$5 fee in addition to the membership charge
- Cash Check: number _____

Special Interests _____

Monthly Meeting Refreshments

Each month different members whose last name begins in a particular letter are requested to furnish refreshments for the club. Below is the list, by month, for 2012.

January	T U V W X Y Z	July	T U V W X Y Z
February	A B C D	August	A B C D
March	E F G H	September	E F G H
April	I J K L M	October	I J K L M
May	N O P Q R	November	N O P R
June	S	December	HOLIDAY PARTY

Members were selected by the approximate number of members attending each meeting.

**Refreshments for the month of February are members whose last names begin in
N, O, P, Q, R**

Los Angeles Cactus and Succulent Society Cacti of the Month May 2012 – *Echinopsis*

The genus *Echinopsis* are found in areas of South America including Argentina, Chile, Bolivia, Peru, Brazil, Ecuador, Paraguay and Uruguay). They are easy to grow, and will reward the grower with spectacular flowers even if they last for just a short period of time. *Echinopsis* hybrids have been propagated by growers for an extended period of time. Robert Schick, a long time member of the club and a long-time benefactor, has his own page in the International Succulent Institute introductions. You can find him at a special tables devoted to his hybrids at the Huntington Botanical Garden annual sale. Modern taxonomy has combined *Echinopsis*, *Lobivia* and *Trichocereus* and most recent authors have described all three under *Echinopsis*.



Echinopsis subdenudata

Echinopsis have flowers that are scaly and woolly with a prominent ring of stamens in the throat. *Lobivia* generally have a short floral tube, flowers that open during the day, and have white or

brightly colored flowers. *Echinopsis* tend to have a long floral tube, and the species usually have white or translucent flowers. There are exceptions to these generalities however, and many intermediate genera were created and abandoned in attempts to clarify the relationships.

In this genus, the awards for enchantment must go to the Schick Hybrids. Any CSSA journal will show amazing flowers. They are annual show stoppers at the Huntington.

There are 128 species associated with the genus *Echinopsis*; some large and tree-like in form while others are small globose plants. What distinguishes *Echinopsis* from other genera is the size and beauty of the flowers which range in color from yellows, to oranges, to reds, to violets. They are truly astounding.

Echinopsis typically grow in areas where gravel or sand soil is present. Plants grow on the side of hills or in rocky crevices.

Another interesting attribute of *Echinopsis* is that the plant sometimes possesses psychedelic properties. Numerous species contain a psychedelic agent that induces an intoxicated state.

There are many exciting and varied species in the genus. What follows is just a few of the possibilities.

Echinopsis oxygona from Southern Brazil is one of true species with spectacular white to light pink flowers.

Echinopsis subdenudata is a species that has a mundane body but large and spectacular white flowers.



Echinopsis ancistrophora



Echinopsis famatimensis



Echinopsis ancistrophora ssp. *arachnacantha*



Echinopsis pachanoi

References:

Anderson, E. **The Cactus Family**
Cullman, Gotz and Groner, **The Encyclopedia of Cacti**
Innes, C. and Glass, C., **Cactus The New Cactus Lexicon**

Tom Glavich September 2004
Edited by Steve Frieze May 2012

Los Angeles Cactus and Succulent Society Succulent of the Month May 2012 - *Gasteria*

Gasteria is a popular and easily grown genus of plants that has been collected and kept as house plants since the 17th century. *Gasteria* flowers are carried on a long scape (leafless flower stalk). They generally hang down as they open, and have a swollen (gasteriform) portion at the base of the flower. The word *Gasteria* comes from the Greek “gaster” meaning stomach or belly.



Gasteria ellaphieae

Gasteria vary in size from about an inch to several feet in diameter. Almost all plants start out with the leaves in two rows (distichous), although most eventually begin to spiral, either remaining in a distichous spiral, or changing into a rosette form. *Gasteria* are very variable in appearance. They have definite juvenile and adult forms, have local variations in appearance, and have form and growth habits that are dependent on the soil type and amount of sunlight.

Typical natural habitats are humus rich, sandy soils. They grow on dry rocky hillsides and generally grow under larger

shrubs particularly when young. They also can be found in rock fissures or in the shade of large rocks. The roots are shallow and thick which helps the plants obtain moisture from barely wet soils, and nourishment from decaying leaves and debris from larger shrubs.



Gasteria armstrongii a Burks Nursery Clone

Gasteria cultivation is easy. They are mostly winter and spring growers, but exhibit some growth all year except for the hottest part of the summer. They are tolerant of almost any growing mix, although they do best with high organic content mixes, similar to their natural growing conditions. They prefer partial shade, particularly in the afternoon; however the best color is obtained by giving them as much light and sun, short of sunburn, as possible.

Tom Glavich May 2005

General Meeting starts at 7:00 PM on the **first Thursday** of the month at the Sepulveda Garden Center located at 16633 Magnolia Blvd. in Encino between Hayvenhurst and Balboa.
Set-up and social hour starts at 6:00 PM.

Bring a smile! Make new friends! **GUESTS ARE ALWAYS WELCOME!**

Visit Los Angeles Cactus and Succulent Society ONLINE at www.lacss.com

Upcoming Program for
May 2012
Member Workshop
Staging, Propagating and Growing
Your Collection

First Class Mail

Sepulveda Garden Ctr. 16633 Magnolia Bl. Encino

Next Meeting:
May 3, 2012

RETURN SERVICE REQUESTED
PO Box 280581, Northridge, CA 91328

CACTUS CHRONICLE
May 2012
Cactus & Succulent Society

